

Community of Practice Summary Report

Taeko Bourque, Anna Blumenthal, Caylee Cook, Bosiljka Milosavljevic



This report provides information about the AfriBCD network Community of Practice, including its goals, scope, impact, and implementation phases. Phase I involved conducting a survey among network members to identify cognitive measures that require adaptation or additional data collection. The report includes survey results from 42 members and a brief summary of the Data Collection Protocol for Phase II. Read the full report here: [Report June23](#)

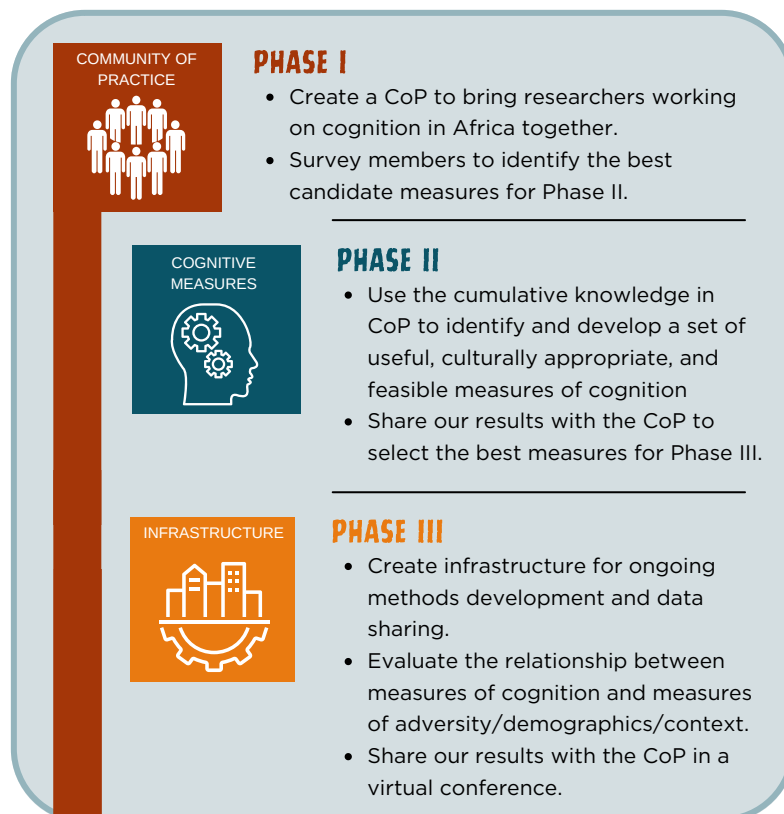
GOAL

Our goal is to create a Community of Practice (CoP) centered around measuring cognition in Africa. CoP members research cognition across development, with many focusing on child development. We embrace open science principles, encourage active engagement, and support researchers in networking, collaborative projects, and accessing funding opportunities.

VISION

Our vision is that this CoP will be a long-lasting space to share ideas, methods, best practices, challenges, and data. This community and its ongoing methods development will be useful across many research teams and partners in Africa, given the ubiquity of these basic cognitive functions across so many areas of health and wellness. This project can also serve as a model for how to catalyze research in other underrepresented communities.

PLAN



FOR MORE INFORMATION:

- Visit our website www.afribcd.org
- Take our survey / Join our mailing list [AfriBCD_CoP](#)
- Follow us on Twitter [@AfriBCD_Network](#)
- Follow us on LinkedIn <https://www.linkedin.com/company/afribcd/>

FUNDING

This CoP is the result of merging a 2-year project funded by a Social Sciences and Humanities Research Council of Canada Insight Development Grant focused on catalyzing cognitive research in Africa and a networking project funded by the UKRI ESRC Secondary Data Analysis Initiative Grant focusing on bringing together researchers who study child development in Africa.

SURVEY RESULTS

Members had a wide range of research expertise and listed many cognitive measures that they found in need of further development (e.g., contextual adaptation, additional testing).

LACK OF APPROPRIATE METHODS IS A MAJOR BARRIER TO INCREASING COGNITION RESEARCH IN AFRICA.



CONTEXTUAL ADAPTATION
ACCESSIBILITY
TRANSLATION
CONSTRUCT VALIDITY
TASK CREATION
BROADER TESTING
LOCAL NORMS

IMPORTANT

Phase II should focus on: Executive function, early learning, self-regulation, memory, reasoning, Theory of Mind, and social cognition.

PHASE II:

DATA COLLECTION PROTOCOL

We will invite adults (18-55) and children (5-17) from our current research sites (Democratic Republic of the Congo, South Africa, Sub-Saharan African refugees or immigrants in Québec) to participate in a 60-minute test session comprising a set of short cognitive tasks measuring nonverbal reasoning, verbal working memory, cognitive flexibility, inhibition, and verbal reasoning.

At a Glance

Responses
42

Home institution in Africa
20

Countries Represented
12

Through our collective efforts, we aspire to cultivate an environment that nurtures knowledge sharing and intellectual growth in the field of cognition research. If you would like to join the CoP or learn more about us, please connect with us.